

RentPlus Access Control Interface ACIShell Setup

Revised 10-April-2009 v3.0.0.6

Install and run the ACIShell.EXE Program on the Computer Running the Gate Software

What is ACIShell?

ACIShell is a program provided by Hi-Tech that allows RentPlus to communicate with your gate system when the two are not on the same computer and cannot easily share a folder, or a program must be called to pass the gate information to the gate program.

Every few seconds, ACIShell will check to see if a gate data file has been created, if it has it will pass it over to the gate program to be processed.

Windows Vista users: please review Appendices 1 to 4 before starting.

Download the ACIShell program

The file may be downloaded from <http://www.hitechsoftware.com/rentplus/help/ACIShell.exe>. Save the ACIShell.exe file to the gate folder (c:\digi, c:\pti, etc.) on the client computer – that is, the computer running the gate software. ** Windows Vista: save to the c:\rentplus folder

Start ACIShell.exe automatically with Windows

Use Control Panel > Scheduled Tasks to setup this program to run automatically with Windows. See instructions later in this document. Alternately, you can create a shortcut to ACIShell.exe and place it in the Program Files\Startup folder.

Setup ACIShell.exe for your system

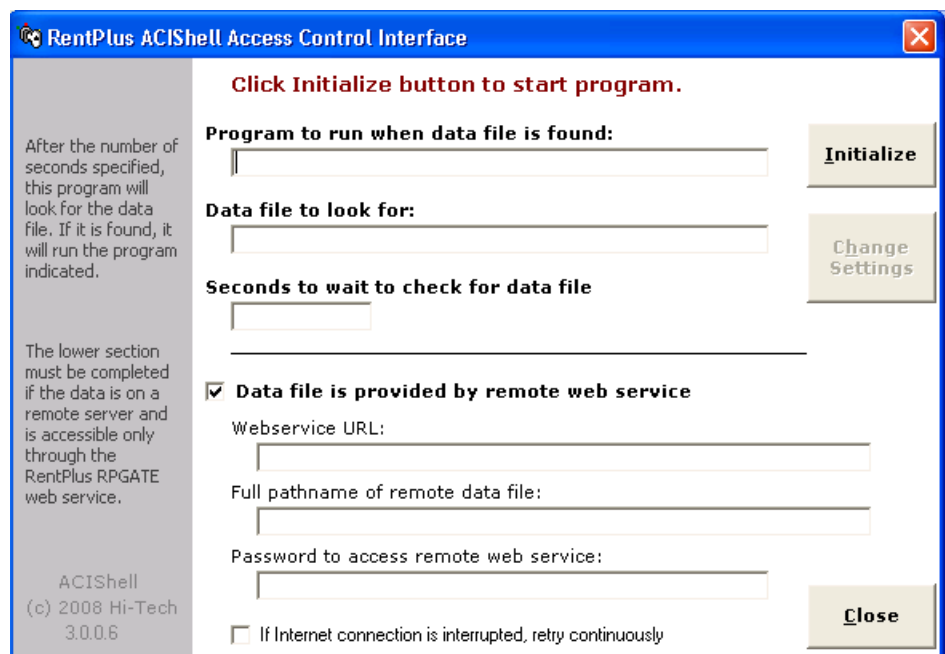
Start the ACIShell.exe program. This first time, click Change Settings and modify the settings as necessary. See settings details later in this document.

Initialize and run ACIShell.exe

When the settings are in place, click Initialize. The form will disappear and an icon will appear in the Windows System Tray:



This icon indicates that the ACIShell program is operating. To open the form again, double-click the icon.



The screenshot shows the "RentPlus ACIShell Access Control Interface" window. The window has a blue title bar and a white background. At the top, it says "Click Initialize button to start program." Below this, there are several input fields and buttons. The "Program to run when data file is found:" field is empty. The "Data file to look for:" field is empty. The "Seconds to wait to check for data file" field is empty. There is a checkbox labeled "Data file is provided by remote web service" which is checked. Below this, there are three input fields: "Webservice URL:", "Full pathname of remote data file:", and "Password to access remote web service:". At the bottom, there is a checkbox labeled "If Internet connection is interrupted, retry continuously" which is unchecked. On the right side of the window, there are three buttons: "Initialize", "Change Settings", and "Close". On the left side, there is a grey box with text: "After the number of seconds specified, this program will look for the data file. If it is found, it will run the program indicated." and "The lower section must be completed if the data is on a remote server and is accessible only through the RentPlus RPGATE web service." At the bottom left, it says "ACIShell (c) 2008 Hi-Tech 3.0.0.6".

ACI Shell Settings

ACIShell can work in two modes:

1. Local mode. RentPlus and your gate software are run on different computers on your local network, and the gate software requires a program to be called to process the data.

Note: if all the computers running RentPlus and the computer running the gate software can share a common data folder, then you do not need to use ACIShell.

2. Remote mode. RentPlus is run on a remote server. The remote server must be running Hi-Tech's RPGate Web Service. If remote mode, you must complete the settings in the lower part of the setup screen.

As you work on the server, RentPlus will add needed gate instructions (lock someone out, let them back in, add or remove a code) to a data file on the server.

Every few seconds the ACIShell program checks with the server to see if there is a new data file. If there is, the contents of the data file on the server are sent to the local data file. If necessary, it will call a gate program to process the file. Often, the gate program will see the file itself and pick it up for processing.

Sample settings:

Digi700

Gate program to run when data file is detected:
Data file to detect for at specified interval below: c:\digi\toread.file
Interval to checking for: 30

PTI Falcon

Gate program to run when data file is detected: c:\pti\ptisend.bat
Data file to detect for at specified interval below: c:\pti\pti.dat
Interval to checking for: 30

WinSen

Gate program to run when data file is detected: c:\gate\update.exe
Data file to detect for at specified interval below: c:\gate\update.txt
Interval to checking for: 30

Remote settings example

√ Data file is provided by remote web service
Web service URL: http://rpgate.hitechsoftware.com/rpgate/rpgate.asmx
Full pathname of remote data file: c:\rentplus\data\digi\toread.fil
Password to access remote web service: [provided by host]
√ If Internet connection is interrupted, retry continuously

Create a Scheduled Task: ACIShell.exe to start when Windows starts

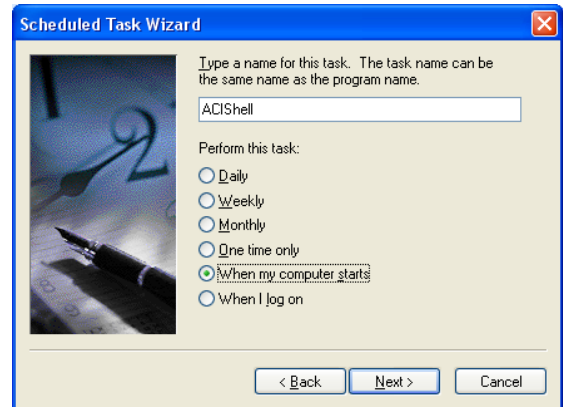
Open the Scheduled Task Wizard from the Windows Control Panel. Click Next to begin.

Click Browse, navigate to the location you placed the ACIShell.exe file and select it.

Click Next.



Select 'When my computer starts' and click Next.



Enter your login name and password and click Next.



That's it. Click Finish to save the Scheduled Task and close the Wizard.



Appendix 1: ACIShell and Windows Vista™ - Security Settings

On Windows Vista, additional steps may be required for ACIShell to work properly.

1. While downloading ACIShell, save to the folder C:\RentPlus – Do NOT save to the Desktop.
2. After downloading, using Windows, open My Computer and then open the C:\ drive. Highlight the RentPlus folder then right click and select Properties. Make sure the Attribute marked Read-Only is un-checked, and click the button marked Unblock (Figure 1) if it is shown.
3. Click on the Security tab then highlight 'Users' and set the permissions to 'Full control' (Figure 2). Click Ok to save the changes.

Figure 1

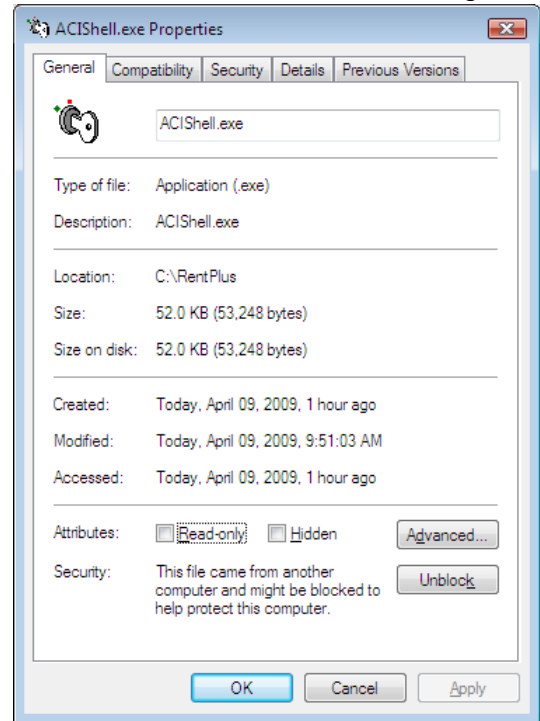
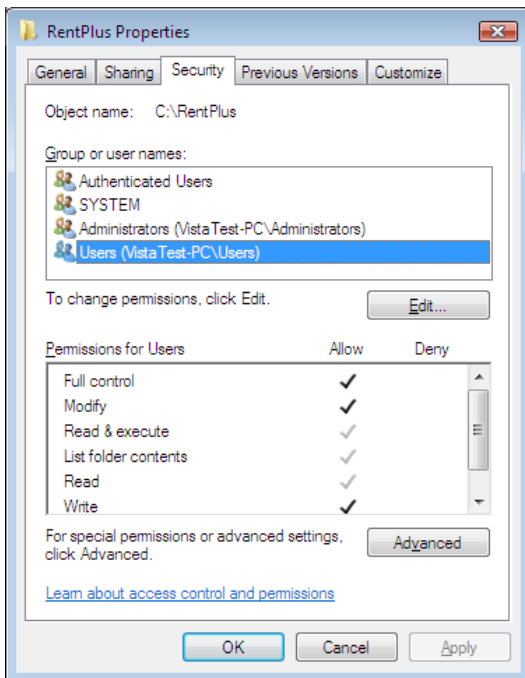


Figure 2



4. Highlight the target folder (usually, one of the following: c:\digi, c:\pti, c:\f2000, c:\winsen, c:\wham) then right click and select Properties. Click on the Security tab then highlight 'Users' and set the permissions to 'Full control' (Figure 3).

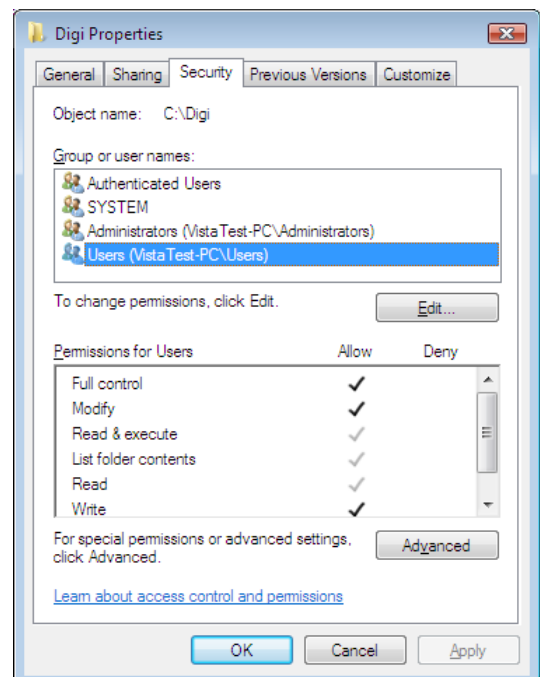


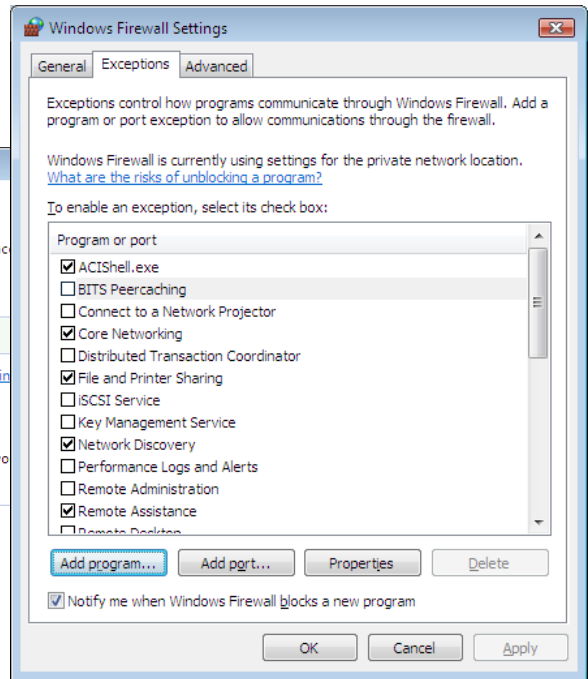
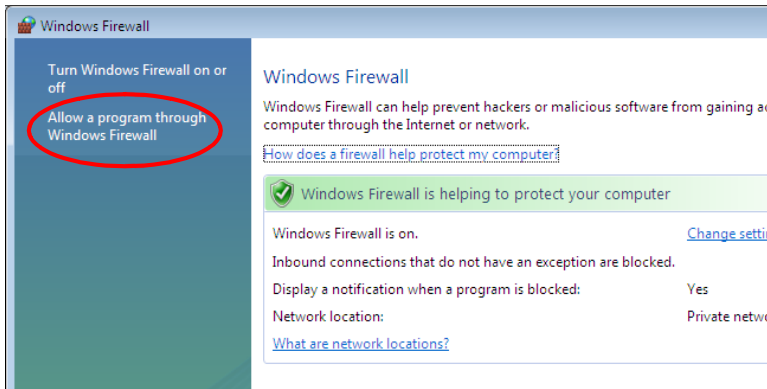
Figure 3

Appendix 2: ACIShell and Firewall and Anti-Virus Settings

Set the Firewall Exclusions

The following instructions are for Windows Firewall and Norton Internet Security. If another Firewall or Anti-Virus program is in place, the same exclusions or exceptions must be created; however, the details of how to accomplish this will vary from system to system. Consult the manufacturer's instructions for details.

Open the Windows Control Panel, and choose the option to **Allow a program through the Windows Firewall**.



On the **Exceptions** tab, click the button marked **Add Program...** Click Browse and select the file **C:\RentPlus\ACIShell.exe** and click Ok. Click Ok again

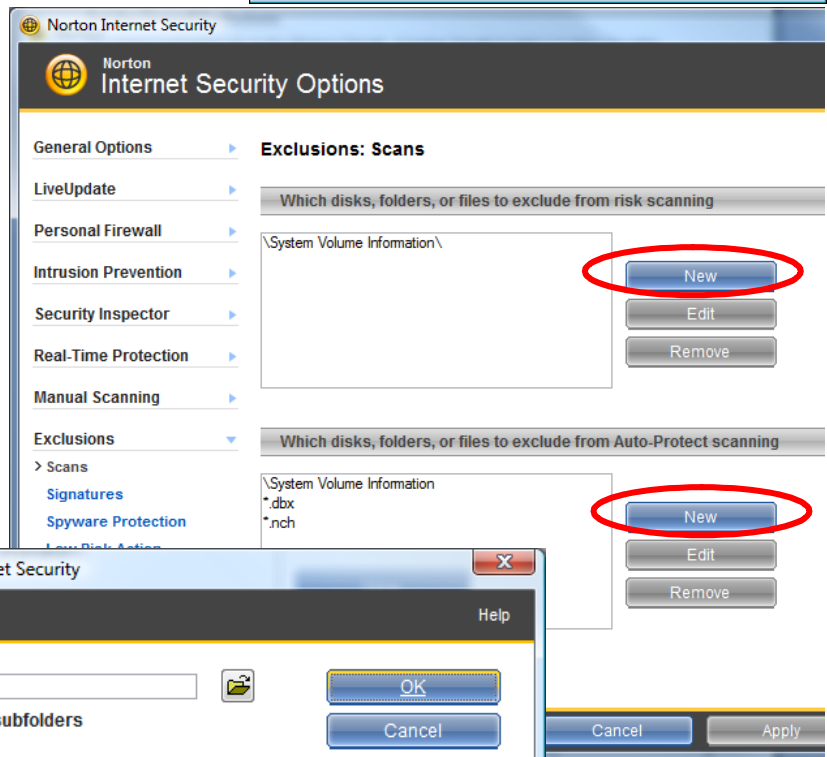
to close the Windows Firewall screen.

Set the Anti-Virus Exclusions

Open Norton Protection Center, click on the Norton Internet Security tab, then click Norton Internet Security Options.

Under 'Which disks, folders, or files to exclude from risk scanning', click New then type c:\rentplus and click OK. Under 'Which disks, folders or files to exclude from Auto-Protect scanning', click New, add c:\rentplus and click OK.

Click Ok to save your changes and close the Norton Internet Security window.

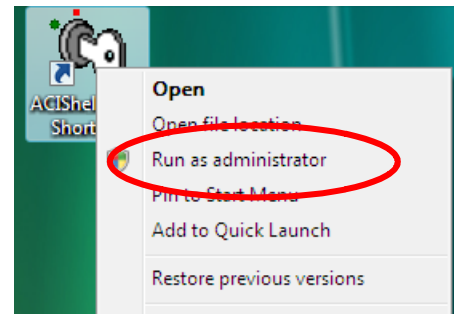


Appendix 3: ACIShell and Windows Vista Shortcut

Create a shortcut on the Windows Desktop for
c:\rentplus\ACIShell.exe.

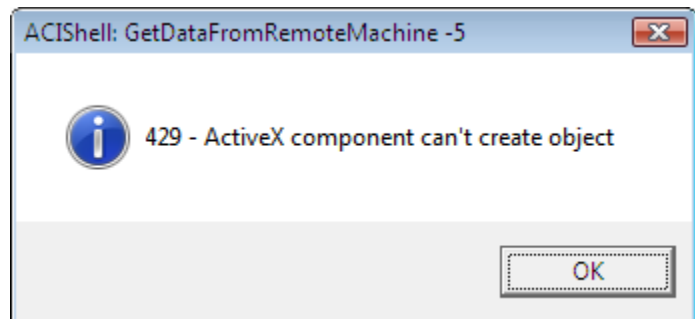
Copy this shortcut to the Windows Start Menu > All Programs > Startup folder.

The first time ACIShell is run from the shortcut, right click on the shortcut, and choose the option to Run as Administrator.



Appendix 4: ACIShell and Windows Vista Trouble-shooting

When you run the ACIShell program, you may see an error message similar to:



If so, close ACIShell then download and run the following utility program:
<http://www.hitechsoftware.com/rentplus/help/MSSoap1Install.exe>.

When this is run, click Yes to continue; after a moment, a message is displayed letting you know that the installation was successful. Click Ok to complete the installation.

If a message other than a success message is shown, contact technical support for further assistance.

