

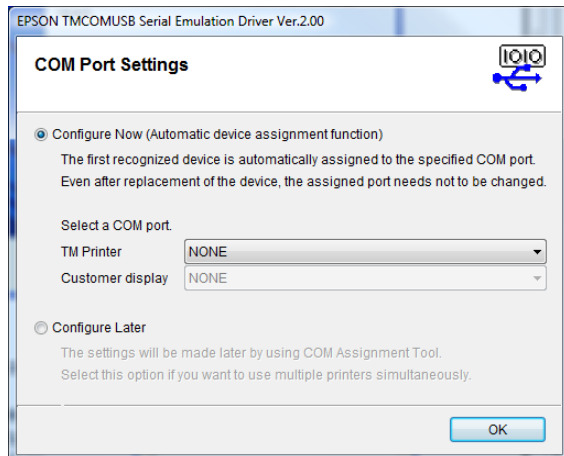
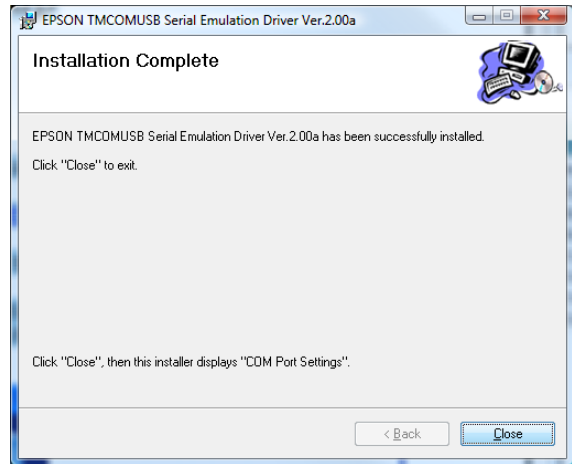
## RentPlus: Receipt Printer Setup For Epson USB Receipt Printers

This setup requires the following file, which may be found on the Hi-Tech FTP Site:

<http://www.hitechsoftware.com/rentplus/help/TMCOMUSB200.exe>

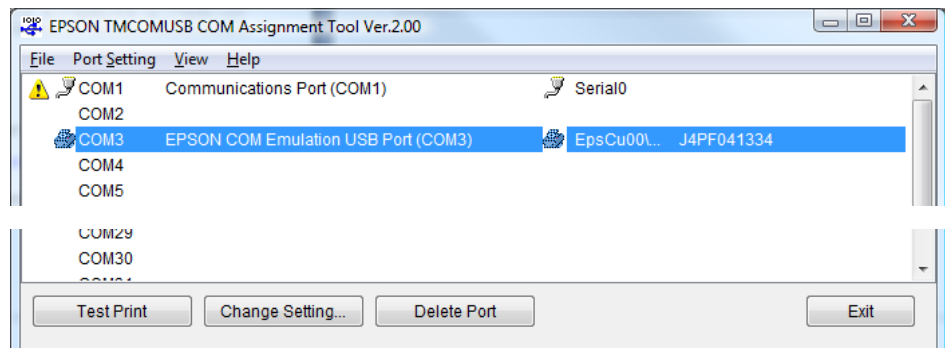
- Copy this file to your local computer (for example, to the c:\rentplus folder).
- Disconnect the receipt printer. Disconnect any existing Receipt Printer USB cable from the computer and delete any existing Receipt Printer from Windows Printers and Faxes.
- Run the Epson Serial Emulation Driver installation program.

Open the TMCOMUSB200.exe program. Follow the on-screen instructions for installing this program, the Epson Serial Emulation Driver. When you get to the end of the installation, see the note on the final screen. When you click Close the Com Port Settings form will be opened.



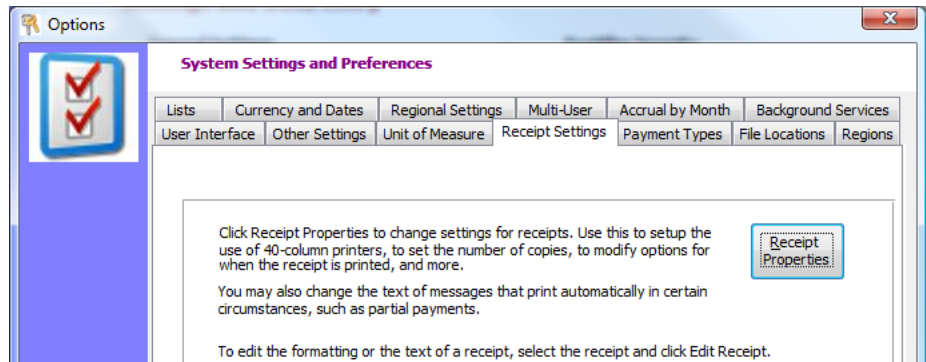
When you see the screen at left, turn the printer on and plug in the USB cable. You may not see any change on screen; just click Ok to close the COM Port Settings form.

Now go to the Windows Start Menu, Programs, and open the Epson TMCOMUSB Serial Emulation Driver COM Assignment tool. That screen will show you the Com Port that has been assigned. In this case, the assigned port is COM3. Note the port and click Exit. You will use that setting in the RentPlus setup.



# Receipt Printer Setup in RentPlus

Select **Options** from the **Setup** tab, then select the **Receipt Settings** tab and click **Receipt Properties**.



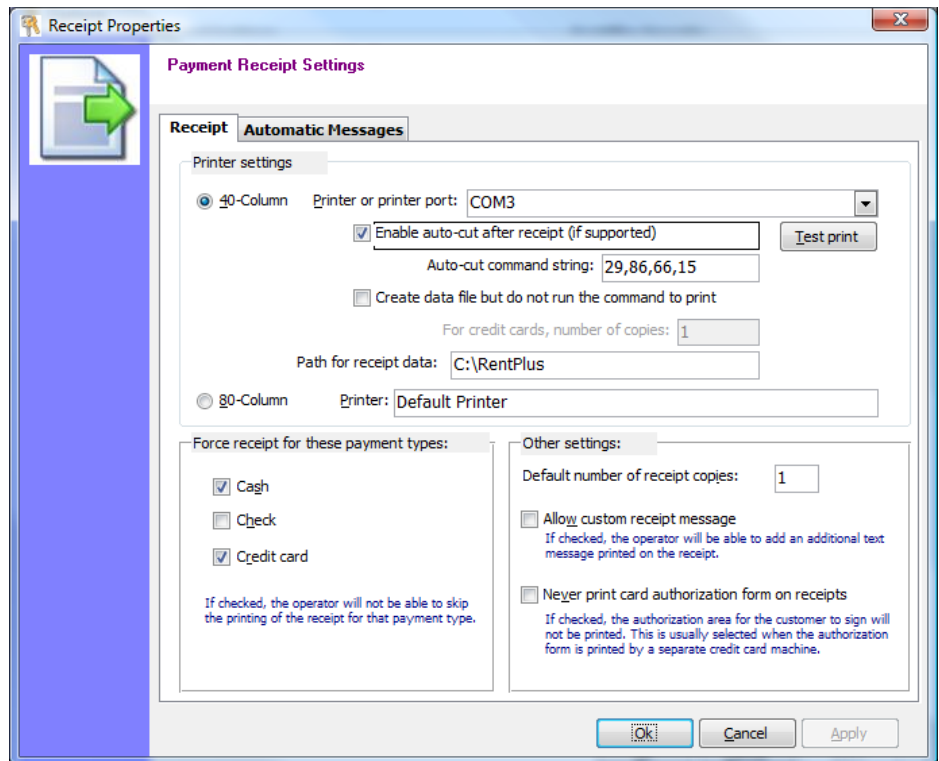
Choose the 40-Column option then specify **COM3** (or alternate port) as the Printer.

Typically, the settings shown here should be used.

Not all receipt printers have auto-cut capability, if it does not cut the paper and you get some strange numbers at the end of the receipt; remove the checkmark from **Enable auto-cut after receipt**.

You will need a checkmark in **Create data file but do not run the command to print** if you are using RentPlus Server or On-Line Editions.

Click **Apply** to save the changes. The receipt printer is now set up.



To test the receipt printer, click Test Print. If everything is setup properly, "Receipt Printer Test" will be printed on the receipt printer.

## How it Works

When something (receipt, cash drawer count) needs to be printed on the receipt printer, RentPlus creates a text file (RP40Col.txt) in the RentPlus folder, then creates or opens a batch file (RP40Col.bat) which sends the contents of the text file to the printer port specified (for example, COM4).

You can re-print the last receipt by running the RP40Col.bat program (usually in the c:\rentplus folder).